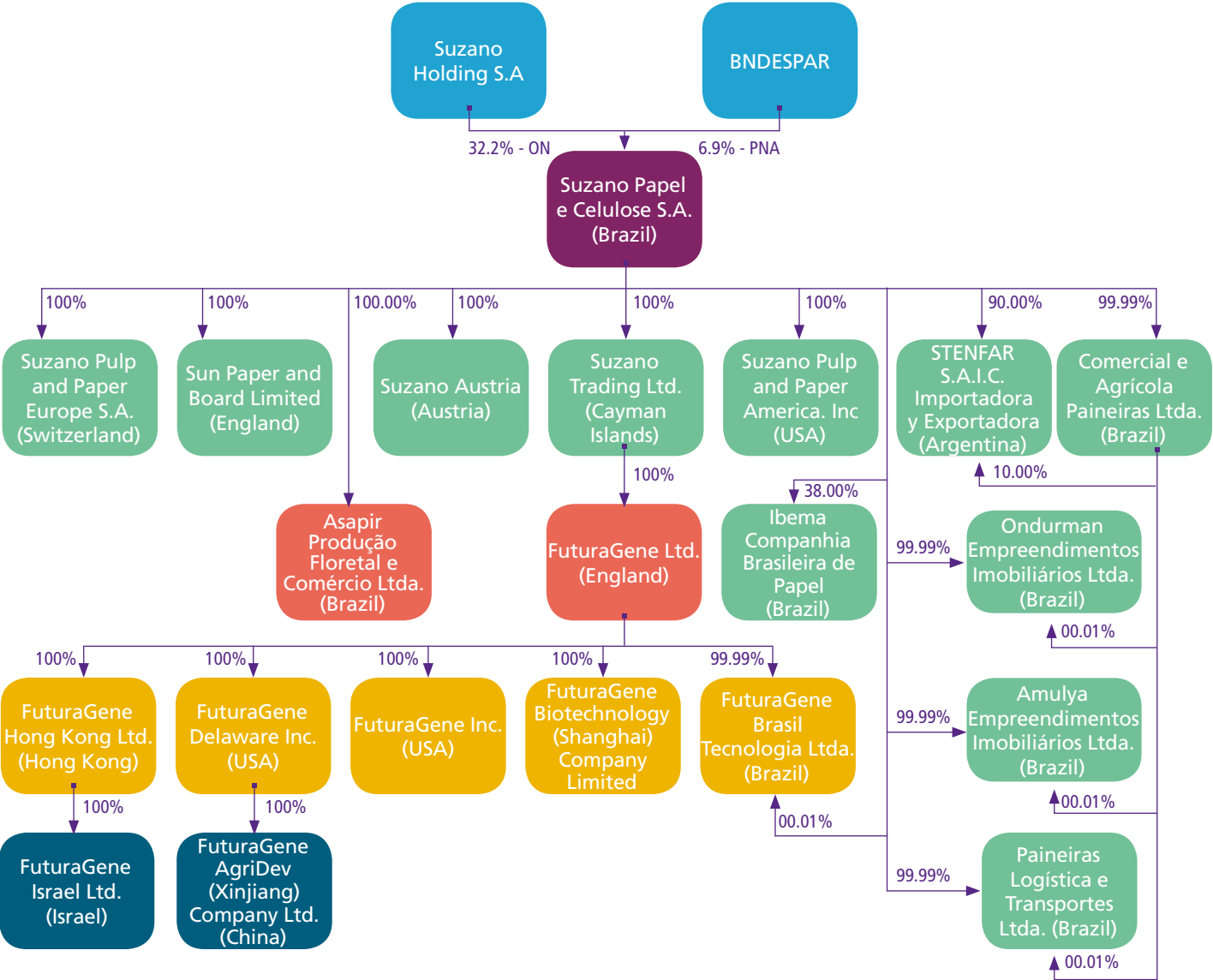


GRI Annex



Identity

List of subsidiaries GRI G4-17



Relationship with subsidiaries GRI G4-17

Company Name	Country	State	City	Activities	Interest
Amulya Empreendimentos Imobiliários Ltda.	Brazil	SP	Suzano	Property management	100%
Comercial e Agrícola Paineiras Ltda.	Brazil	SP	Suzano	Forestry production support activities	100%
Ondurman Empreendimentos Imobiliários Ltda.	Brazil	SP	Suzano	Leasing of own properties	100%
Paineiras Logística e Transporte Ltda.	Brazil	SP	Suzano	Logistics services management	100%
Asapir Produção Florestal e Comércio Ltda.	Brazil	SP	Limeira	Trading, purchase, and sale of Wood and wood waste and forestry activities	50%
Ibema Companhia Brasileira de Papel	Brazil	PR	Curitiba	Paper production	38%
Stenfar S.A. Ind. Com. Imp. y Exp.	Argentina	-	Buenos Aires	Trading in paper and plastic materials	90%
Suzano Austria GmbH	Austria	-	Vienna	Holding company	100%
Suzano Pulp and Paper America, Inc	USA	-	Fort Lauderdale	Trading in pulp, paper and derivatives	100%
Suzano Trading Ltd.	Cayman Islands	-	George Town	Trading in pulp, paper and derivatives	100%
Sun Paper and Board Limited	England	-	London	Trading in paper and derivatives	100%
FuturaGene Ltd.	United Kingdom	-	-	Biotechnology research and development	100%
Suzano Pulp and Paper Europe S.A.	Switzerland	-	Nyon	Trading in pulp, paper and derivatives	100%



Corporate Governance

Voluntary commitments [GRI G4-15](#)

- **Business Charter for the Conservation and Sustainable Use of Biodiversity:** signatory of the Business Charter for the Conservation and Sustainable Use of Biodiversity, in order to bring the importance of conserving biological diversity to the global public debate.
- **Brazil Coalition on Climate, Forests and Agriculture:** An initiative to contribute to the advancement of agendas for the protection, conservation, and sustainable use of forests, sustainable agriculture, and mitigation of and adaptation to climate change.
- **Strategic Sustainability Committee (AMCHAM):** seeks to incorporate sustainability into business models; we are members.
- **Business Pact for Integrity and Against Corruption:** coordinated by the United Nations Development Program (UNDP).
- **Global Compact:** A United Nations (UN) initiative to adopt ten principles related to human rights, labor relations, the environment, and combating corruption.
- **Brazilian Pact to Eradicate Slave Labor:** an initiative by the Ethos Institute and the International Labor Organization (ILO).
- **Pact to Restore the Atlantic Forest:** initiative by public and private institutions that works to preserve fragments of Atlantic Forest and recover 15 million hectares by 2050; we are a member of the advisory council.
- **Platform for an Inclusive, Green and Responsible Economy:** an activity conducted by the Ethos Institute, developed by companies and organizations with guidelines for a new economy.

Partner Organizations [GRI G4-16](#)

- Brazilian Pulp and Paper Technical Association (ABTCP)
- Center for Sustainability Studies (GVces)
- Business Commitment to Recycling (Cempre)
- Brazilian Business Council for Sustainable Development (CEBDS)
- Conservation International (CI)
- Brazilian Tree Industry (IBÁ)
- Ethos Institute
- Itapoty Institute
- Mabuia Institute
- Peabiru Institute
- The Forest Dialog
- Forest Science and Research Institute (Ipef)
- Ecofuturo Institute
- Forest Stewardship Council® (FSC® – C010014)
- Forest Forum
- Friends of the Earth
- National Forest Dialog
- Florestar São Paulo
- The Nature Conservancy (TNC)
- Viveiro Mata Branca/Caatinga Ecological Institute
- World Business Council for Sustainable Development (WBCSD)
- World Wildlife Fund (WWF)

Senior executives hired from the local community [GRI G4-EC6](#)

Category	2016														
	South			Southeast			Midwest			Northeast			North		
	Asset	LL	%	Asset	LL	%	Asset	LL	%	Asset	LL	%	Asset	LL	%
Chief Executive Officer	0	0	0.0	1	1	100.0	0	0	0.0	0	0	0.0	0	0	0.0
Officer	0	0	0.0	5	3	60.0	0	0	0.0	0	0	0.0	0	0	0.0
Director	0	0	0.0	8	5	62.5	0	0	0.0	0	0	0.0	0	0	0.0
Senior Executives	0	0	0.0	14	9	64.3	0	0	0.0	0	0	0.0	0	0	0.0
Executive Manager	0	0	0.0	33	29	87.9	0	0	0.0	13	1	7.7	0	0	0.0
Manager	1	0	0.0	106	96	90.6	0	0	0.0	56	9	16.1	0	0	0.0
Managers	1	0	0.0	139	125	89.9	0	0	0.0	69	10	14.5	0	0	0.0
Total	1	0	0.0	153	134	87.6	0	0	0.0	69	10	14.5	0	0	0.0

LL - Local labor. "Local labor" considers the employee's place of birth in relation to their place of work when hired.

Financial Capital

Distribution of Value Added (DVA) [GRI G4-EC1](#)

	Controller		Consolidated	
	12/31/2016	12/31/2015	12/31/2016	12/31/2015
Revenues				
Sales of goods, products and services	10,212,164	11,047,326	10,969,878	11,195,335
Other revenue/expenditures (net)	(770,082)	41,031	(999,430)	48,887
Revenue from construction of own assets	518,295	355,364	518,295	355,364
Provision for impairment losses on accounts receivable (net)	(8,101)	(21,308)	(9,505)	(21,425)
	9,952,276	11,422,413	10,479,238	11,578,161





	Controller		Consolidated	
	12/31/2016	12/31/2015	12/31/2016	12/31/2015
Inputs acquired from third parties				
Costs of products, goods and services sold	(4,098,613)	(4,235,266)	(4,098,613)	(4,235,266)
Materials, energy, third-party services and other	(1,989,559)	(1,723,880)	(2,375,104)	(1,945,882)
	(6,088,172)	(5,959,146)	(6,473,717)	(6,181,148)
Gross value added	3,864,104	5,463,267	4,005,521	5,397,013
Depreciation, amortization and depletion	(1,387,109)	(1,402,163)	(1,403,518)	(1,419,477)
Net value added produced	2,476,995	4,061,104	2,602,003	3,977,536
Value added received through transfer				
Equity pickup	167,436	(306,204)	(7,127)	-
Financial income	551,110	1,117,127	823,430	1,258,567
	718,546	810,923	816,303	1,258,657
Value added to distribute	3,195,541	4,872,027	3,418,306	5,236,193
Personnel	955,351	935,935	984,707	957,859
Direct compensation	766,468	761,297	792,683	780,557
Benefits	150,466	134,961	153,607	137,625
FGTS	38,417	39,677	38,417	39,677
Taxes, fees and contributions	944,290	(550,387)	944,886	(561,423)
Federal	1,040,288	(382,720)	1,068,751	(393,628)
State	(101,191)	(172,534)	(128,918)	(172,534)
Municipal	5,193	4,867	5,053	4,739
Value distributed to providers of capital	(396,098)	5,411,833	(203,285)	5,765,111
Interest	(466,478)	5,339,100	(277,670)	5,687,162
Rent	70,380	72,733	74,385	77,949
Value distributed to shareholders	1,691,998	(925,354)	1,691,998	(925,354)
Dividends	370,828	-	370,828	-
Loss in the year	1,321,170	(925,354)	1,321,170	(925,354)
Distribution of value added	3,195,541	4,872,027	3,418,306	5,236,193

Impact of investments in infrastructure and services **GRI G4-EC7**

Socioeconomic impact
Hiring local EPS promotes ongoing income generation and movement of the local economy in cities where we operate.
Multiple forest uses promote income generation for beekeepers and associations.
Rural exodus caused by the extensive eucalyptus cultivation.
Low employability caused by eucalyptus plantations.
Rural exodus resulting from numerous factors (not only eucalyptus cultivation).
Myth of drought caused by eucalyptus cultivation.
Planting eucalyptus in mosaics and ecological corridors promote conservation of native forests, biodiversity, and protection of water resources, permitting sustainable extraction in local communities.
Social projects to promote health, environmental education for children and young people, partnerships for improving academic performance, construction and renovation of community libraries, preservation of traditional indigenous cultures, establishment of community councils to strengthen the relationship between us and the communities.

Human Capital

Employees: by region and gender **GRI G4-10**

	Women	Men	Total
Midwest	15	20	35
Northeast	305	2,982	3,287
North	23	153	176
Southeast	605	3,303	3,908
South	33	45	78
Total	981	6,503	7,484*

**This number does not include employees on leave, apprentices, trainees, or students in the Formare program.*

Employees: by contract type and gender **GRI G4-10**

	Women	Men	Total
Active/Permanent	981	6,503	7,484
Temporary	11	14	25



Employees: by contract type and gender [GRI G4-10](#)

	Women	Men	Total
Part-time	106	2,966	3,072
Full-time	875	3,537	4,412

Employees: by contract type and gender [GRI G4-10](#)

	Women	Men	Total
Administrative	345	737	1,082
Advisors	0	1	1
Consultants	58	279	337
Coordinators	39	118	157
Directors	0	8	8
Officers	0	5	5
Specialists	278	383	661
Executive Managers	2	44	46
Functional Managers	24	139	163
Operational	231	4,604	4,835
Supervisors	4	185	189
Total	981	6,503	7,484

Employees: abroad [GRI G4-10](#)

International Offices	Headcount	Expatriates
Stenfar Argentina	114	0
Suzano América (United States)	18	1
Sun Paper (England)	2	0
Suzano Europa (Switzerland)	13	2
Suzano Ásia (China)	11	0



Suppliers by region [GRI G4-12](#)

Region	No. Recorded	Percent (%)
Midwest	388	3
Northeast	2,780	18
North	419	3
Southeast	9,969	65
South	1,682	11
Total	15,238	100

Turnover by region GRI G4-LA1

Region	Year	New hires	Resignations	Other terminations	Average headcount	Traditional	Resignations - Turnover	Terminations - Turnover
South	2016	12	1	9	77	1.84%	0.11%	0.97%
	2015	29	5	13	74	4.28%	0.56%	1.46%
Southeast	2016	515	71	604	4,016	1.77%	0.15%	1.25%
	2015	674	88	344	4,021	1.84%	0.18%	0.71%
Midwest	2016	11	1	8	37	3.49%	0.23%	1.80%
	2015	15	2	13	36	5.21%	0.46%	3.01%
Northeast	2016	446	55	395	3,307	1.69%	0.14%	1.00%
	2015	642	70	350	3,351	2.12%	0.17%	0.87%
North	2016	56	1	26	167	3.47%	0.32%	1.30%
	2015	4	0	4	9	5.56%	0.00%	3.70%
Total	2016	1,040	129	1,042	7,604	1.78%	0.14%	1.14%
	2015	1,364	165	724	7,491	2.01%	0.18%	0.81%

Turnover by gender GRI G4-LA1

Gender	Year	New hires	Resignations	Other terminations	Average headcount	Traditional	Resignations - Turnover	Terminations - Turnover
Men	2016	405	58	548	6,551	0.90%	0.07%	0.70%
	2015	1,087	124	616	6,537	1.86%	0.16%	0.79%
Women	2016	635	71	493	1,052	7.26%	0.56%	3.91%
	2015	277	59	156	955	3.36%	0.51%	1.36%

Turnover by age GRI G4-LA1

Age range	Year	New hires	Resignations	Other terminations	Average headcount	Traditional	Resignations - Turnover	Terminations - Turnover
<30 years	2016	599	69	358	2,206	3.07%	0.26%	1.35%
	2015	680	81	199	2,165	3.16%	0.31%	0.77%
From 30 to 50 years	2016	434	59	580	4,720	1.33%	0.10%	1.02%
	2015	655	84	436	4,671	1.63%	0.15%	0.78%
50 +	2016	7	1	103	677	0.73%	0.01%	1.27%
	2015	29	0	89	656	0.93%	0.00%	1.13%

Benefits granted to employees and supervised workers GRI G4-LA2 | G4-EC3

	Amount Invested (R\$)	Contributed by the employee
Life insurance	1,900,408	Regressive table based on time of service
Health plan	51,393,908	Discount according to co-pay
impairment/disability	N/A	Amounts paid via life insurance
Maternity and paternity leave	N/A	N/A
Pension fund	4,641,318	Percentage of employee's salary for URS
Stock option plan	14,516,762	One-third of the amount granted

N/A - Not applicable

Return to work and retention rates after maternity/paternity leave (by gender)* GRI G4-LA3

	Paternity	Maternity
Number of employees entitled to maternity/paternity leave	6,503	981
Number of employees who received maternity/paternity leave	334	51
Number of employees who returned to work after maternity/paternity leave	334	51
Number of employees who returned to work after maternity/paternity leave and stayed 12 months after returning to work	317	42
Return to work and retention rates after maternity/paternity leave	100%	100%
Retention of employees who received maternity/paternity leave	95%	82%

**9 women and 17 men left less than one year after returning from leave.*



Rate of accidents with lost time

GRI G4-LA6

Unit	2014	2015	2016
UNI Suzano	0.86	1.32	1.62
UNI Rio Verde	1.99	4.54	1.86
UNI Mucuri	2.18	0.46	0.75
UNI Embu	0.00	N/A	N/A
UNI Limeira	1.88	0.95	0.78
UNI Imperatriz	0.67	0.97	0.32
UNF SP	0.23	0.28	0.3
UNF BA	0.52	0.46	0.2
UNF MA/PI	1.04	0.23	0.00
UNF PI	0.00	0.00	N/A
SPP	1.01	0.00	0.00
SP Office	0.00	0.00	0.00
Total	0.95	0.67	0.55

Rate of accidents without lost time

GRI G4-LA6

Unit	2014	2015	2016
UNI Suzano	4.28	2.65	2.52
UNI Rio Verde	1.99	4.54	1.86
UNI Mucuri	2.77	2.32	1.69
UNI Embu	5.82	N/A	N/A
UNI Limeira	2.42	1.90	2.61
UNI Imperatriz	3.02	2.91	2.86
UNF SP	1.88	1.14	0.91
UNF BA	1.05	1.23	1.41
UNF MA/PI	2.26	0.94	0.51
UNF PI	0.00	0.00	N/A
SPP	2.02	0.67	2.01
SP Office	0.00	0.00	1.34
Total	2.20	1.41	1.45

Rate of lost days GRI G4-LA6

Unit	2014	2015	2016
UNI Suzano	77	1291	81.49
UNI Rio Verde	8	393.44	195.63
UNI Mucuri	886	16.06	10.5
UNI Embu	0.00	N/A	N/A
UNI Limeira	384	68.67	50.06
UNI Imperatriz	22	5.83	4.45
UNF SP	229	33.36	18.42
UNF BA	524	37.52	3.22
UNF MA/PI	6,257	11.08	0.00
UNF PI	0.00	0.00	N/A
SPP	5	0.00	0.00
SP Office	0.00	0.00	0.00
Total	8,402	160.49	28.66



Health and safety aspects covered in formal agreements with trade unions GRI G4-LA8

Type	Description
Regular inspections	Task analysis, Common Sense Inspections, OHSE, and assessments of legal requirements
Personal protective equipment	PPE (SAP Management)
Joint safety and health committees formed by senior executives and employees	OHS Committees (Areas, CIPA, CIPATR, GT OHS)
Participation of employee representatives in health and safety inspections, audits, and accident investigations	Inspections according to NR 05 and procedure for analyzing incidents (participation in accordance with PPG)
Training and education	SAP training courses
Grievance mechanisms	Formal grievance management system (GID) and Code of Conduct
Conformity with International Labor Organization (ILO)	Application of OHSAS 18000 and NR
Problem resolution mechanisms or structures	GID system
Commitment to comply with desired performance standards or level of practice to be applied	Targets for frequency rate, GID, IAC, recognition program, Green Light
Right to refuse unsafe work	Provided for in the work access permission

Average number of training hours per employee (by gender and by function) GRI G4-LA9

	Courseload, with degree	Courseload, without degree		Courseload, with degree	Courseload, without degree
Por gênero			By function		
Women	4.14	4.08	Trainee	2.96	2.96
Men	8.02	7.29	Manager	14.26	11.10
By function			Operations	8.97	8.24
Administration	4.13	4.13	Supervisor	5.83	4.94
Apprentice	2.86	2.86	Average 2016		
Advisor	3.00	3.00	Per employee	7.59	6.93
Consultant	4.76	3.81			
Coordinator	7.20	5.25			
Director	1.57	1.57			
Specialist	5.40	4.80			

Purchases by region GRI G4-EC9

Unit	Regional (%)	Non regional (%)
UNI Imperatriz	33	67
UNI Limeira	85	15
UNI Mucuri	29	71
UNI Suzano	77	23
Total	54	46

*Local (regional) purchases are items acquired from business operations located in the same regions as our mills.



Social Capital

Operations with negative impacts on local communities GRI G4-SO2

Area	Impact	Effects	Procedures
Wood transport	<ul style="list-style-type: none"> ● Vehicle traffic on roadways ● Wood falling on roadways during transport 	<ul style="list-style-type: none"> ● Damage to public property (roads, sidewalks, etc.), resulting in time lost on roads and economic losses related to road and vehicle maintenance ● Risk of accidents ● Dust from wood transport 	<ul style="list-style-type: none"> ● Maintain roads used by communities ● Notify affected parties of maintenance actions performed and clarify that other companies also transport loads and are responsible for roadway maintenance ● Publicize communication channels for grievances and suggestions ● Remove any loose materials from loads that might fall during transit (bark, branches and other debris) according to wood transport procedure ● Communicate these measures and safety procedures adopted during loading to stakeholders





Area	Impact	Effects	Procedures
Forestry	<ul style="list-style-type: none">● Herbicide application● Shade caused by eucalyptus plantations● Falling trees● Plantation growth	<ul style="list-style-type: none">● Perceived health risk from application of herbicides in eucalyptus cultivation● Shading neighboring crops, resulting in low productivity and economic losses● Power outages when trees fall on lines● Blockage of cell phone signal by older plantations	<ul style="list-style-type: none">● Apply herbicides according to control procedures and plantation quality● Maintain a safe distance from communities, wells and rivers used for public water supply during aerial application, according to applicable legislation● In aerial application of herbicide, inform stakeholders in surrounding areas of the duration of the activity and health and safety procedures● Inform stakeholders about procedures for applying herbicides● Maintain distance between cultivated areas and communities, residents and power lines, according to procedure
Wood transport and/or harvesting	<ul style="list-style-type: none">● Noise caused by harvesters and trailers● Cutting stands, causing displacement or proliferation of venomous animals and insects	<ul style="list-style-type: none">● Discomfort and sleep disturbance● Venomous animals and insects enter homes	<ul style="list-style-type: none">● Reduce truck speed near neighborhoods and homes, according to procedure and route schedule● Train drivers● Avoid harvesting at night near residences● Publicize communication channels for grievances and suggestions● Whenever possible, when harvesting near residences work from the borders toward the inner area of the forest
Eucalyptus cultivation	<ul style="list-style-type: none">● Extensive eucalyptus cultivation● Consumption of water from the soil and water table	<ul style="list-style-type: none">● Difficulties generating income and unemployment in the region● Belief that eucalyptus plantations reduce water availability	<ul style="list-style-type: none">● Engage in associations to participate in income-generation projects● Inform stakeholders about sustainable management to dispel myths about water consumption in eucalyptus cultivation

Natural Capital

Energy consumption within the organization

GRI G4-EN3 | G4-EN6

Unit	Energy consumed (GJ)	
	2015	2016
Offices	6,442.75	13,962.95
Distribution Centers	9,201.68	7,908.56
Forestry Units	856,096.82	858,418.12
Industrial Units	107,635,638.63	103,052,395.16
Total	108,507,379.88	103,932,684.79

Energy consumption within GRI G4-EN3 | G4-EN6

Unit	Energy consumed (GJ)	
	2015	2016
Non-renewable fuels (GJ)	15,996,768.08	15,980,103.08
Renewable fuels (GJ)	90,671,491.37	85,848,357.19
Electricity acquired (GJ)	1,839,120.43	2,104,224.52
Electricity sold (GJ)	2,609,891.28	2,634,840.00
Total (consumed):	108,507,379.88	103,932,684.79

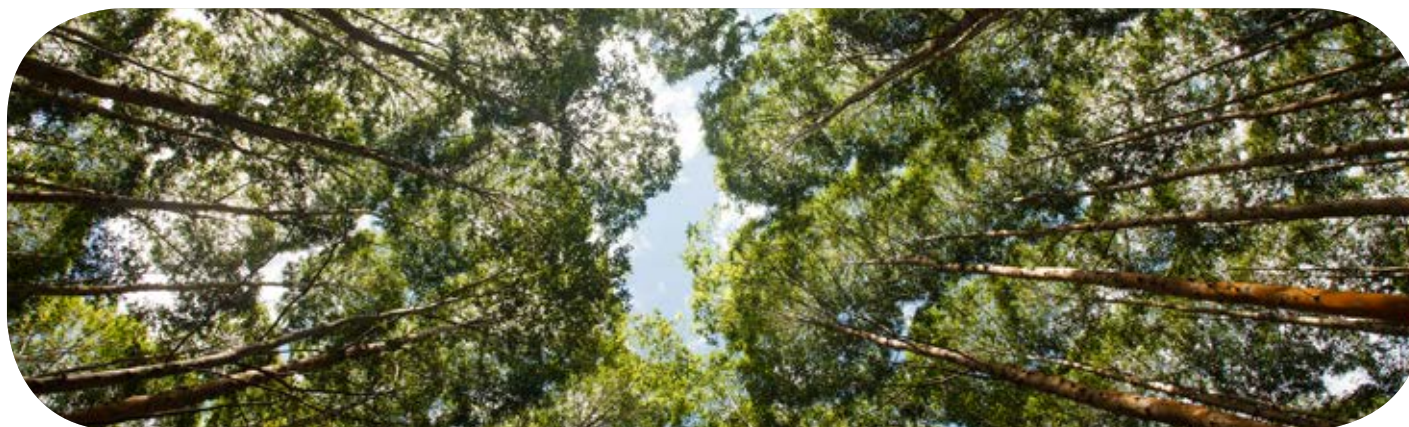
Energy intensity* GRI G4-EN5

Unit	Measure (GJ/tsa)
Energy intensity	23.74

*Considers energy (GJ) from Scopes 1 and 2 for marketable pulp (tsa – transferred between units + market pulp + pulp for paper).

Energy consumption outside the organization GRI G4-EN4

Unit	Energy consumed (GJ)
Offices	97,720.87
Distribution Centers	161,473.07
Forestry Units	1,366,759.65
Industrial Units	1,423,045.30
International Logistics	2,243,196.00
Total	3,048,998.89



Water consumption and recycling GRI G4-EN8 | G4-EN10

Unit	Type of source	Source	Consumption (m³)	Reuse (m³)
UNI Imperatriz	Surface water	Tocantins River	36,929,219.23	4,302,914.03
UNI Mucuri	Surface water	Mucuri River	56,026,806.00	0.00
UNI Limeira	Surface water	Piracicaba River	23,995,101.94	0.00
UNI Suzano	Surface water	Tietê River	26,677,008.00	0.00
UNI Rio Verde	Surface water	Tietê River	751,126.20	0.00
	Surface water	Various	23,420.00	0.00
UNF MA	Ground water	Various	6,193.00	0.00
	Surface water	Various	140.00	0.00
UNF PI	Ground water	Various	300.00	0.00
	Surface water	Various	338,469.00	0.00
UNF BA*	Ground water	Various	198,605.95	198,605.95
	Surface water	Various	60,471.50	0.00
UNF SP	Ground water	Various	9,108.86	0.00

**Effluent from the nursery is not discharged: some is used to irrigate coconut trees and grass, and some is infiltrated in a productive area (eucalyptus).*

Water bodies significantly affected GRI G4-EN9

Source	City	Average annual volume (m³)	Withdrawal, as percent of average annual volume
Tocantins River	Imperatriz	344,000,000,000.00	0.01%
Mucuri River	Mucuri	955,225,440.00	5.87%
Piracicaba River	Limeira	4,541,184,000.00	0.56%
Tietê River	Suzano	286,815,168.00	9.3%



Water bodies significantly affected* GRI G4-EN9

Source	City	Attributes
Três Barras River	Itararé	Located in a type 4 HCVA for communities and the local population, supplying 50,000 people in the region of Itararé
Tributary of Ribeirão dos Veados		
Tributary of Ribeirão Tamanduá	Itatinga	
Ribeirão do Atalho		
Upper Paranapanema River	Angatuba	Located within the Botucatu Environmental Protection Area
Aquifer Piramboia Formation		
Unnamed tributary to the Jurumirim Reservoir	Avaré	
Unnamed tributary to the Jurumirim Reservoir		
Serra Geral Aquifer Formation		
Tributary to the Santo Inácio River	Pardinho	
Córrego Rodrigues	Botucatu	

**All uses are permitted by DAEE and are in accordance with sustainable forest management.*

Use of areas GRI G4-EN11

	Conservation units adjacent to our areas	Biome	Area (ha)
UNF SP	Serra do Mar Environmental Protection Area (State)*	Atlantic Forest	489,000
	Paraíba do Sul River Basin Environmental Protection Area (Federal)	Atlantic Forest	292,597
	Piracicaba-Juqueri-Mirim Environmental Protection Area (State)*	Atlantic Forest with Cerrado enclaves	107,596
	Intervales State Park	Atlantic Forest	41,704
	Carlos Botelho State Park	Atlantic Forest	37,644
	Itirapina Ecological Station (State)	Natural fields and Cerrado	2,300
	Serra do Mar State Park	Atlantic Forest	332,000
	Horto Florestal Natural Heritage Area and Edmundo Navarro de Andrade (State)	Atlantic Forest	2,230
	Araribá Indigenous Land	Atlantic Forest	2,179
	Caetetus Ecological Station (State)	Atlantic Forest	2,179





	Conservation units adjacent to our areas	Biome	Area (ha)
UNF SP	Angatuba Ecological Station	Atlantic Forest	1,394
	Santa Maria Ecological Station (State)	Atlantic Forest	1,301
	Paranapanema Ecological Station (State)	Atlantic Forest	635
	Paranapiacaba Biological Reserve (State)	Atlantic Forest	336
	Sebastião Aleixo da Silva or Bauru Ecological Station (State)	Atlantic Forest	300
	Vassununga State Park	Atlantic Forest	151
	Nascentes do Tietê Ecological Park (State)*	Atlantic Forest	134
	Itapeva Ecological Station (State)	Cerrado	107
	São Carlos Ecological Station (State)	Cerrado	75.26
	Nascentes do Tietê Natural Heritage Area (State)	Atlantic Forest	134
	Corumbataí-Botucatu-Tejupá - Botucatu Perimeter*	Cerrado and Atlantic Forest	251,615.12
UNF MA	Chapada das Mesas at Carolina National Park	Cerrado	160,046
	Krikati Indigenous Reserve	N/A	146,000
	Bacurizinho Indigenous Reserve	N/A	82,000
	Mata Grande Extractive Reserve	Cerrado	11,432
	Ciriaco Extractive Reserve	Amazon	8,107
	Gurupi Biological Reserve	Amazon	271,198
	Extreme North of Tocantins State Extractive Reserve	Cerrado	9,071
	Fossilized Trees Natural Monument	Cerrado	32,067
	Taquari River Environmental Protection Area	Cerrado	26,152
	Cassurubá Extractive Reserve*	Coastal	100,768
UNF BA	Sooretama Biological Reserve	Atlantic Forest	27,859
	Conceição da Barra Environmental Protection Area*	Atlantic Forest	7,728
	Itaúnas State Park*	Atlantic Forest	3,150
	Rio Preto National Forest (FLONA)*	Atlantic Forest	2,817
	Córrego do Veado Biological Reserve	Atlantic Forest	2,382
	Córrego Grande Biological Reserve	Atlantic Forest	1,504
	Costa Dourada Environmental Protection Area*	Atlantic Forest	3,500 (approx.)

*Areas located inside conservation units.

Use of areas GRI G4-EN11

Category	Area (ha)					
	Owned	Leased	Subtotal	Development Programs	Wood Market	Total
Planting	326,182	125,866	452,048	65,889	8,506	526,443
Available for replanting	7,535	2,953	10,488	3,898	3,285	17,671
Available for planting	93,351	16,027	109,378	738	0	110,116
Preservation	316,301	175,075	491,376	0	0	491,376
Infrastructure	34,320	8,706	43,026	0	0	43,026
Total	777,690	328,627	1,106,317	70,525	11,791	1,188,633

Impacts on biodiversity GRI G4-EN12

Aspects	Impacts of Forestry Unit	Mitigating measure Forestry Unit
Pollution (introduction of substances that do not occur naturally in the habitat, from isolated or non-isolated sources)	Changes in soil/ water quality	We have forest management plans, manuals and procedures that guide employees on forestry processes (chemical controls, ant control, etc.) and we also provide land use maps showing protected areas, as well as markers in APPs in the field.
Fires (forests or equipment)	Damage to biodiversity	We developed Floresta Viva, a program to strengthen our image in the communities where our forestry units are located by raising awareness about environmental preservation and prevention of fires in reforested areas.
Erosion	Damage to biodiversity	Water runoff trenches are built between the plantation rows in order to not waste space. During and after planting, when rain falls we monitor points for correction and improvements in soil conservation and roads. This process should be continuous throughout the first cycle.

Protected habitats GRI G4-EN13

UNF	Name	Area (ha)	City	Biome
UNF SP	Siriema II	349	Itirapina-SP	Cerrado
	Capanhão	871.19	Biritiba Mirim-SP	Atlantic Forest
	Ibiti	1,024.11	Itararé-SP	Atlantic Forest
	Montes Claros	1,231.13	São José dos Campos-SP	Atlantic Forest
UNF BA	Entre Rios	303.58	Angatuba-SP	Atlantic Forest
	Tract - 11F	2,148.88	Caravelas-BA	Atlantic Forest
	Tracts - 11F and 11G	135.87	Caravelas-BA	Atlantic Forest
	Tract - 13C	434.82	Caravelas-BA	Atlantic Forest
	Tracts - 14B and 15A	2,159.71	Mucuri-BA	Atlantic Forest
	Tract - 21B	107.95	Pedro Canário-ES	Atlantic Forest
	Tract - 21B II	274.38	Conceição da Barra-ES	Atlantic Forest
	Tract - 32C	787.85	Carlos Chagas-MG	Atlantic Forest
	Tract - 11D	854.58	Caravelas-BA	Atlantic Forest
	Tract - 11G	587.64	Caravelas-BA	Atlantic Forest
	Tract - 21B III	1,011.67	Conceição da Barra-ES	Atlantic Forest
	Tract - 15E (Água Vermelha)	449.55	Mucuri-BA	Atlantic Forest
	Tract - 22B (Block 10 FRD)	3,450.41	São Mateus-ES	Atlantic Forest
	Tract - 11C (Block 20)	219.90	Teixeira de Freitas-BA	Atlantic Forest
	Tract - 13G/13H (Block 34)	2,569.47	Nova Viçosa-BA	Atlantic Forest
	Tract - 11B (Block 48)	493.92	Alcobaça-BA	Atlantic Forest
	Tract - 15C (Block 56)	1,195.14	Mucuri-BA	Atlantic Forest
	Tract - 21B (Block G-3)	286.77	Conceição da Barra-ES	Atlantic Forest
	Tract - 15A (DIDIQUESA)	818.05	Mucuri-BA	Atlantic Forest
	UNF MA	Bloco Boa Esperança	3,475.10	São Pedro da Água Branca-MA
Bloco Jurema		5,955.96	São Pedro da Água Branca-MA	Amazon
Itabaiana		1,688.37	Açailândia-MA	Amazon
São Bento		421.65	Açailândia-MA	Amazon
Supresa		614.20	Dom Eliseu-PA	Amazon
Califórnia		2,096.88	Dom Eliseu-PA	Amazon
Santa Maria HM		385.06	Dom Eliseu-PA	Amazon





UNF	Name	Area (ha)	City	Biome
UNF MA	Sayonara	2,070.53	Paragominas-PA	Amazon
	Senhor do Bonfim I	893.16	Paragominas-PA	Amazon
	Senhor do Bonfim II	1,116.53	Paragominas-PA	Amazon
	Chalé II	1,120.51	Paragominas-PA	Amazon
	Paraíso	2,418.63	Paragominas-PA	Amazon
	Tamboril	1,440.27	Angico-TO	Cerrado
	MAAB	1,097.10	Riachinho-TO	Cerrado
	São Roque	593.11	Darcinópolis-TO	Cerrado

Species on the IUCN Red List and national conservation lists [GRI G4-EN14](#)

Unit	Quantity	Species	IUCN Risk Level	National Risk Level
BA	11 birds	<i>Amazona farinosa</i> (Southern mealy amazon)	Near-threatened	-
		<i>Amazona rhodocorytha</i> (Red-browed amazon)	Endangered	Vulnerable
		<i>Amazona vinacea</i> (Vinaceous-breasted Amazon)	Endangered	Vulnerable
		<i>Malacoptila striata</i> (Greater crescent-chested)	Near-threatened	-
		<i>Myrmotherula urosticta</i> (Band-tailed)	Vulnerable	Vulnerable
		<i>Primolius maracana</i> (Blue-winged macaw)	Near-threatened	-
		<i>Procnias nudicollis</i> (Bare-throated bellbird)	Vulnerable	-
		<i>Ramphastos vitellinus</i> (Channel-billed toucan)	Vulnerable	-
		<i>Schiffornis turdina</i> (Brown-winged mourner)	Least concern	Vulnerable
		<i>Thamnophilus caerulescens</i> (Variable antshrike)	-	-
		<i>Touit surdus</i> (Golden-tailed parrotlet)	Vulnerable	Vulnerable
	5 mammals	<i>Attila spadiceus</i> (Bright-rumped atilla)	Least concern	Vulnerable
		<i>Callicebus melanochir</i> (Coastal black-handed titi)	-	Vulnerable
<i>Callithrix geoffroyi</i> (Geoffrey's tufted-ear marmoset)		Least concern	-	
1 reptile	<i>Leopardus pardalis</i> (Ocelot)	Least concern	-	
	<i>Tayassu pecari</i> (White-lipped peccary)	Vulnerable	Vulnerable	
		<i>Acanthochelys radiolata</i> (Brazilian radiolated swamp turtle)	Near-threatened	-





Unit	Quantity	Species	IUCN Risk Level	National Risk Level
BA	5 species of flora	<i>Alchornea glandulosa</i>	-	-
		<i>Cariniana legalis</i> (Jequitibá-rosa)	Vulnerable	Endangered
		<i>Cedrela fissilis</i>	Endangered	Vulnerable
		<i>Cupana furfuracea</i> Radlk	-	Vulnerable
		<i>Joannesia princeps</i> (Arara nut tree)	Vulnerable	Least concern
	6 mammals	<i>Chrysocyon brachyurus</i> (Maned wolf)	Near-threatened	Vulnerable
		<i>Leopardus pardalis</i> (Ocelot)	Least concern	-
		<i>Leopardus sp.</i> (Oncilla)	-	-
		<i>Mazama sp.</i> (Brocket deer)	Vulnerable	-
		<i>Puma concolor</i> (Puma)	Least concern	Vulnerable
		<i>Tapirus terrestris</i> (Brazilian tapir)	Vulnerable	Vulnerable
SP	19 birds	<i>Alectrurus tricolor</i> (Cock-tailed tyrant)	Vulnerable	Vulnerable
		<i>Biatas nigropectus</i> (White-bearded antshrike)	Vulnerable	-
		<i>Carpornis cucullata</i> (Hooded berryeater)	Near-threatened	-
		<i>Cyanoloxia brissonii</i> (Ultramarine grosbeak)	Least concern	-
		<i>Cypsnagra hirundinacea</i> (White-rumped tanager)	Least concern	-
		<i>Donacospiza albifrons</i> (long-tailed reed-finch)	Least concern	-
		<i>Eleoscytalopus indigoticus</i> (White-breasted tapaculo)	Near-threatened	-
		<i>Embernagra platensis</i> (Great Pampa-finch)	Least concern	-
		<i>Euphonia chalybea</i> (Green-chinned euphonia)	Near-threatened	-
		<i>Geotrygon violacea</i> (Violaceous quail-dove)	Least concern	-
		<i>Hemitriccus orbitatus</i> (Eye-ringed tody-tyrant)	Near-threatened	-
		<i>Jabiru mycteria</i> (Jabiru)	Least concern	-
		<i>Neothraupis fasciata</i> (White-banded tanager)	Near-threatened	-
		<i>Procnias nudicollis</i> (Bare-throated bellbird)	Vulnerable	-
<i>Pseudastur polionotus</i> (Mantled hawk)	Near-threatened	-		
<i>Pteroglossus bailloni</i> (Saffron toucanet)	Near-threatened	-		
<i>Pyroderus scutatus</i> (Red-ruffed fruitcrow)	Least concern	-		
<i>Saltatricula atricollis</i> (Black-throated saltator)	-	-		
<i>Sarcoramphus papa</i> (King vulture)	Least concern	-		





Unit	Quantity	Species	IUCN Risk Level	National Risk Level
SP	+ 10 birds	<i>Spizaetus melanoleucus</i> (Black-and-white hawk-eagle)	Least concern	-
		<i>Spizaetus tyrannus</i> (Black hawk-eagle)	Least concern	-
		<i>Sporophila angolensis</i> (Chestnut-bellied seed-finch)	Least concern	-
		<i>Sporophila falcirostris</i> (Temminck's seedeater)	Vulnerable	Vulnerável
		<i>Sporophila frontalis</i> (Buffy-fronted seedeater)	Vulnerable	Vulnerable
		<i>Sporophila pileata</i> (Pearly-bellied seedeater)	Least concern	-
		<i>Sporophila plumbea</i> (Plumbeous seedeater)	Least concern	-
		<i>Tangara cyanoptera</i> (Azure-shouldered tanager)	Near-threatened	-
		<i>Tinamus solitarius</i> (Solitary tinamou)	Near-threatened	-
		<i>Urubitinga coronata</i> (Crowned eagle)	-	Endangered
	18 species of flora	<i>Araucaria angustifolia</i> (Paraná pine)	Endangered	Endangered
		<i>Campomanesia neriiflora</i>	Vulnerable	Least concern
		<i>Campomanesia neriiflora</i> (Guabiroba-branca)	Vulnerable	Least concern
		<i>Cedrela fissilis</i> (Cedro-rosa)	Endangered	Vulnerable
		<i>Euterpe edulis</i> (Palmito-juçara)	-	Vulnerable
		<i>Inga sellowiana</i>	Endangered	Near-threatened
		<i>Machaerium villosum</i> (Jacarandá-do-cerrado)	Vulnerable	Least concern
		<i>Myrceugenia campestris</i>	Vulnerable	Least concern
		<i>Myrcianthes pungens</i> (Guabiju)	Endangered	Least concern
		<i>Myrciaria cuspidata</i>	Vulnerable	Least concern
		<i>Myroxylon peruiferum</i>	-	Least concern
		<i>Nectandra cf. barbellata</i> (Canela)	-	-
		<i>Ocotea odorifera</i>	-	Em perigo
		<i>Ocotea odorifera</i> (Brazilian sassafrás)	-	Em perigo
		<i>Plinia complanata</i> (Cambuca)	-	Em perigo
		<i>Rudgea jasminoides</i>	-	-
		<i>Trichilia casaretti</i> (Pé-de-galinha)	Vulnerable	Least concern
<i>Zeyheria tuberculosa</i>	Vulnerable	Vulnerable		





Unit	Quantity	Species	IUCN Risk Level	National Risk Level
MA	23 birds	<i>Amazona farinosa</i> (Southern Mealy Amazon)	-	-
		<i>Anodorhynchus hyacinthinus</i> (Hyacinth macaw)	Vulnerable	-
		<i>Celeus obrieni</i> (Kaempfer's woodpecker)	Endangered	Vulnerable
		<i>Charitospiza eucosma</i> (Coalcrest)	Near-threatened	-
		<i>Euscarthmus rufomarginatus</i> (Rufous-sided pygmy-tyrant)	Near-threatened	-
		<i>Grallaria varia</i> (Variegated antpitta)	Least concern	Vulnerable
		<i>Guaruba guarouba</i> (Golden parakeet)	Vulnerable	Vulnerable
		<i>Harpy harpyja</i> (Harpy eagle)	Least concern	Vulnerable
		<i>Odontophorus gujanensis</i> (Marbled wood-quail)	Least concern	-
		<i>Patagioenas subviinacea</i> (Ruddy pigeon)	-	-
		<i>Penelope pileata</i> (White-crested guan)	Vulnerable	Vulnerable
		<i>Penelope superciliaris</i> (Rusty-margined guan)	Least concern	Critically endangered
		<i>Phlegopsis nigromaculata</i> (Black-spotted bare-eye)	Least concern	Vulnerable
		<i>Piprites chloris</i> (Wing-barred piprites)	Least concern	Vulnerable
		<i>Porphyrospiza caerulescens</i> (Blue finch)	Near-threatened	-
		<i>Primolius maracana</i> (Blue-winged macaw)	Near-threatened	-
		<i>Pteroglossus bitorquatus</i> (Eastern red-necked araçari)	Endangered	-
		<i>Pyrrhura amazonum</i> (Santarem parakeet)	Endangered	-
		<i>Pyrrhura lepida</i> (Pearly parakeet)	Vulnerable	Vulnerable
		<i>Ramphastos tucanus</i> (Red-billed toucan)	Vulnerable	-
		<i>Ramphastos vitellinus</i> (Channel-billed toucan)	Vulnerable	-
		<i>Rhea americana</i> (Greater rhea)	Near-threatened	-
		<i>Urubitinga coronata</i> (Crowned eagle)	-	Endangered
5 species of flora	<i>Cedrela odorata</i> L. (Spanish cedar)	Vulnerable	Vulnerable	
	<i>Hymenaea courbaril</i> L.	-	Least concern	
	<i>Myracrodruon urundeuva</i> Allemão	-	Least concern	
	<i>Protium heptaphyllum</i> (Aubl.) March.	-	-	
	<i>Tabebuia impetiginosa</i> (Mart.) Standl.	Least concern	Near-threatened	





Unit	Quantity	Species	IUCN Risk Level	National Risk Level
MA	9 mammals	<i>Alouatta belzebul</i> (Red-handed howler)	Vulnerable	Vulnerable
		<i>Ateles sp.</i> (Spider monkey)	-	-
		<i>Chiropotes sataná</i> s (Black-bearded saki)	Critically endangered	Critically endangered
		<i>Leopardus tigrinus</i>	Vulnerable	Em perigo
		<i>Puma concolor</i>	Least concern	Vulnerable
		<i>Saguinus niger</i> (Black-handed tamarin)	Vulnerable	Vulnerable
		<i>Speothos venaticus</i> (Bush dog)	Near-threatened	Vulnerable
		<i>Tapirus terrestris</i> (Brazilian tapir)	Vulnerable	Vulnerable
		<i>Tayassu pecari</i> (White-lipped peccary)	Vulnerable	Vulnerable



Direct Greenhouse Gas Emissions (Scope 1) GRI G4-EN15

Unit	Emissions (tCO ₂ e)	Gross biogenic emissions (tCO ₂ e)
UNI Suzano	197,114.62	360,980.97
UNI Imperatriz	233,453.62	3,296,094.14
UNI Mucuri	198,277.96	3,974,304.80
UNI Limeira	127,793.01	1,397,594.30
UNI Rio Verde	26,822.73	0.68
UNF SP	33,934.46	1,306.97
UNF BA	47,883.85	1,454.55
UNF MA	57,970.92	1,613.77
UNF PI	109.10	19.60
SPP	17.99	0.62
Headquarter	347.75	565.82
International offices	79.71	0.00
Total	923,805.72	9,033,936.22

Direct Greenhouse Gas Emissions (Scope 2) GRI G4-EN16

Unit	Emissions (tCO ₂ e)
UNI Suzano	15,869.72
UNI Imperatriz	299.47
UNI Mucuri	59.74
UNI Limeira	28,031.49
UNI Rio Verde	3,186.25
UNF SP	46.88
UNF BA	7.55
UNF MA	12.61
UNF PI	33.14
SPP	119.67
Headquarter	33.16
International offices	238.96
Total	47,938.64

Indirect Greenhouse Gas Emissions (Scope 3) GRI G4-EN17

Unit	Emissions (tCO ₂ e)	Gross biogenic emissions (tCO ₂ e)
UNI Suzano	12,697.35	608.16
UNI Imperatriz	36,066.48	2,074.64
UNI Mucuri	41,985.75	2,901.72
UNI Limeira	25,845.38	1,198.02
UNI Rio Verde	688.60	35.73
UNF SP	31,421.62	2,754.41
UNF BA	35,798.83	2,581.17
UNF MA	51,999.45	1,930.83
UNF PI	0.02	0.00
SPP	10,056.78	692.44
Headquarter	1,876.41	0.00
Outbound Port a Port	174,189.38	0.00
International offices	99,299.83	83.05
Total	521,925.87	14,860.17



GHG emissions intensity
GRI G4-EN18

Unit	Intensity (tCO ₂ e)	
	2015	2016
UNI Suzano	0.432	0.381
UNI Imperatriz	0.157	0.167
UNI Mucuri	0.113	0.115
UNI Limeira	0.185	0.186
Overall average	0.215	0.212

**Scope 1 emissions, considering marketable pulp (transferred between units + market pulp + pulp for paper).*

Emissions of ozone-depleting substances (ODS) GRI G4-EN20

Imports (kg)	2015	2016
HCFC-22	7,511.92	8,571.18
HCFC-141b	493.00	727.05
HCFC-124	27.00	54.40
Total	8,031.92	9,352.63

Controlled emissions - By type (in tons) GRI G4-EN21

Unit	NO _x	SO _x	Particulate Matter	TRS
UNI Imperatriz	2,745.18	227.00	485.06	58.49
UNI Mucuri	3,293.00	567.00	869.00	146.00
UNI Limeira	1,685.68	1,219.60	891.92	4.52
UNI Suzano	969.60	122.90	320.50	22.80
UNI Rio Verde	15.60	0.00	0.00	0.00



Effluents GRI G4-EN22

Unit	Volume (m³)	COD (mg/L)	BOD ₅ (mg/L)	Treatment method	Destination	Reused by another organization	Methodology
UNI Imperatriz	25,208,769.96	298.29	3.410	Activated sludge	Tocantins River	No	Direct measurement
UNI Mucuri	42,068,613.00	335.00	27.800	Primary Treatment followed by lake aeration and MBBR reactors	Mucuri River	No	Direct measurement
UNI Limeira	18,282,047.39	276.00	14.000	Primary treatment, activated sludge, secondary treatment, polishing	Piracicaba River	No	Direct measurement
UNI Suzano	20,321,664.00	228.10	24.000	Primary treatment, secondary treatment through lake aeration, polishing	Tietê River	No	Direct measurement
UNI Rio Verde	674,822.00	224.00	50.000	Primary treatment, secondary treatment through lake aeration, polishing	Tietê River	No	Direct measurement

Solid waste disposal, weight and destination (in tons) [GRI G4-EN23](#) | [G4-EN25](#)

Type of destination	UNF SP	UNF MA	UNF BA	UNI Mucuri	UNI Imperatriz	UNI Suzano	UNI Limeira	UNI Rio Verde
Storage	0.00	0.00	616.00	201,400.30	0.00	0.00	0,00	0.00
Landfill	0.00	0.00	59,400	87,696.30	99,100.85	39,663.00	124.00	0.00
Composting	0.00	0.00	0.00	0.00	0.00	11,152.00	39,900.00	905.00
Co-processing	35.18	0.00	0.00	0.00	0.00	0.00	190.74	0.00
Incineration	0.00	67,223.00	0.00	0.00	47.89	98.35	0,00	0.00
Recycling	3.77	8,035.00	5,207.00	4,065.00	51,431.07	82,919.80	30,072.00	14,787.35
Reuse	0.00	0.00	0.00	2,647.66	0.00	7,335.00	24,942.00	0.00
Refining	7.83	19,990.00	0.00	130.70	25.41	0.00	0.00	0.00
Recovery	0.00	0.00	0.00	0.00	0.00	0.00	0.00	0.00
Total	46.78	95,248.00	65,223.00	295,939.96	150,605.22	141,168.14	95,228.74	15,692.35

Hazardous waste weight (in tons) [GRI G4-EN23](#) | [G4-EN25](#)

Hazard Level	UNF SP	UNF MA	UNF BA	UNI Mucuri	UNI Imperatriz	UNI Suzano	UNI Limeira	UNI Rio Verde
Non-hazardous	3.77	8,035.00	5,823.00	295,809.26	150,531.15	141,067.55	165.09	15,692.35
Hazardous	43.01	87,213.00	59,400.00	130.70	74.07	100.59	95,063.65	0.00
Total	46.78	95,248.00	65,223.00	295,939.96	150,605.22	141,168.14	95,228.74	15,692.35

Water Bodies significantly affected by water discharge **GRI G4-EN26**

Unit	River	Flow (m³/s)
UNF BA	Mucuri	30.29
UNI Limeira	Piracicaba	133.60
UNI Suzano	Tietê	9.07
UNI Maranhão	Tocantins	8,000.00

Environmental impacts of transporting products

GRI G4-EN30

Impact	Number of complaints
Speed, impact on traffic, etc.	3
Dust	8
Roadway maintenance and soil erosion	51
Accidents involving wildlife	1
Noise	2

Environmental protection expenditures and investments **GRI G4-EN31**

Forestry Units	Environmental protection expenditures (R\$)
Flora and fauna monitoring	243,063.75
Hydrological monitoring	889,847.38
Waste disposal	438,490.27
Preventing and fighting forest fires	34,186.69
Environmental restoration	3,765,158.00
Industrial	Environmental protection expenditures (R\$)
Disposal of solid waste ¹	28,746,803.00
Management/Monitoring ²	9,651,719.00
Other investments	131,537,161.00

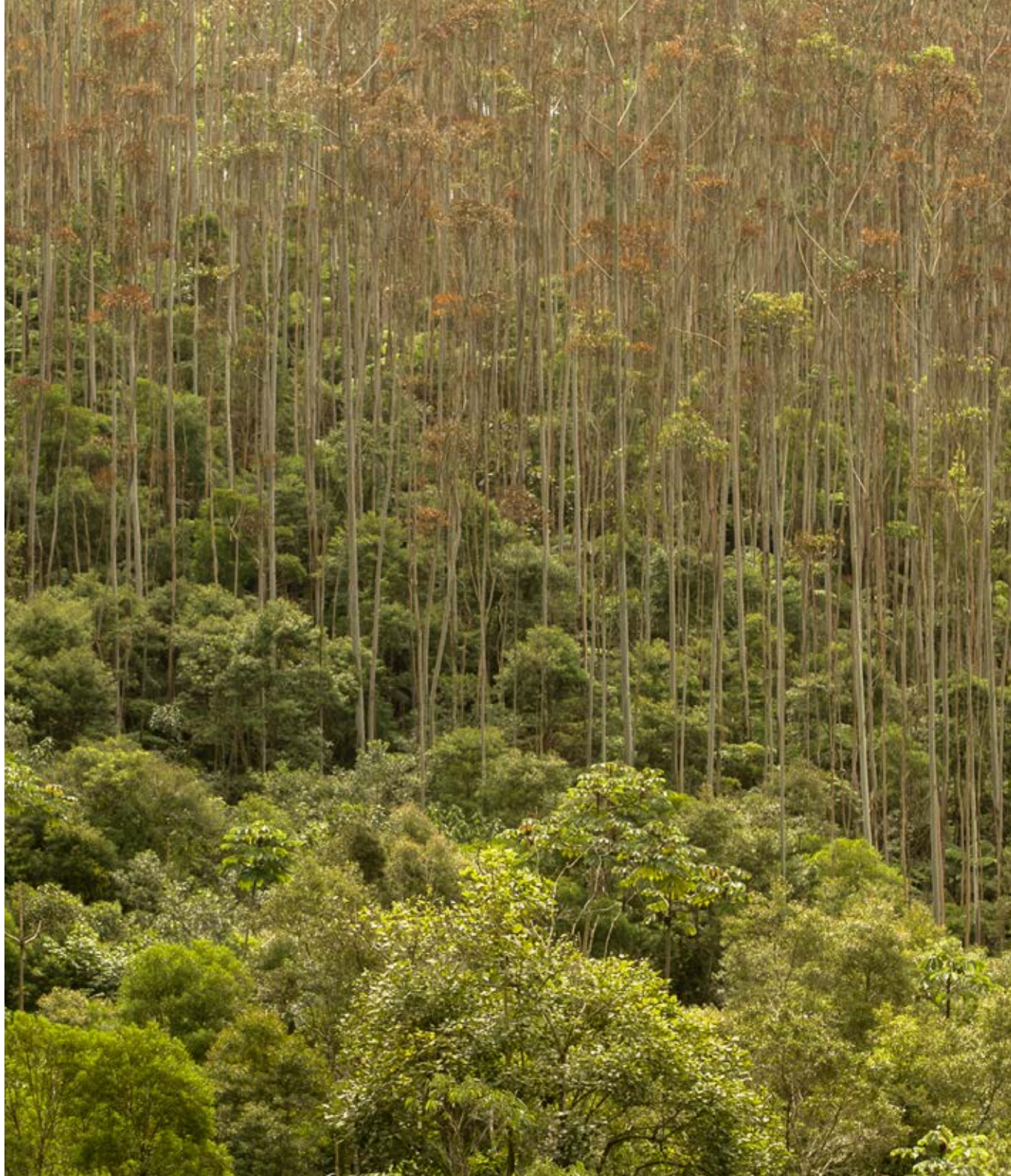
¹ Total annual value (R\$) posted on the balance sheet for waste for each unit

² Total annual value (R\$) for balance sheets for environment (except waste), including personnel





GRI Content Index



GENERAL STANDARD CONTENTS

		Chapter/Answer	Global Compact	Sustainable Development Goals
Strategy and Analysis				
G4-1	Message from the CEO.	Message from the CEO.		
G4-3	Name of the organization.	About Suzano		
G4-4	Primary products, brands and services.	About Suzano		
G4-5	Location of organization's headquarters.	About Suzano		
G4-6	Number of countries where the organization operates.	About Suzano		9
G4-7	Nature of ownership and legal form organization.	About Suzano		
G4-8	Markets served.	About Suzano		
G4-9	Scale of the organization.	Manufactured Capital/ Operation		
G4-10	Total number of employees, broken down by employment contract and gender.	Human Capital/ Employees	6	
G4-11	Percentage of employees covered by collective bargaining agreements.	100% of employees are covered by collective bargaining		8
G4-12	Organization's supply chain.	GRI/Human Capital		11
G4-13	Significant changes regarding the organization's size, structure, shareholding or supply chain.	Manufactured Capital/ Operation		
G4-14	How the precautionary approach or principle is addressed by the organization.	About Suzano /Risk Management	7	12
G4-15	Externally developed charters, principles, or other initiatives.	GRI Annex/Corporate Governanc	1 10	10 12 13 15 16 17
G4-16	Membership in national or international associations and organizations.	GRI/Corporate Governance	1 10	10 12 13 15 16 17
G4-17	Entities included in the organization's consolidated financial statements.	GRI Annex/Relationship with subsidiaries		
G4-18	Process for defining report content.	Transparency in reporting		

GENERAL STANDARD CONTENTS

		Chapter/Answer	Global Compact	Sustainable Development Goals
Strategy and Analysis				
G4-19	Material aspects identified in the process for Defining report content.	Transparency in reporting		
G4-20	Material aspect boundary within the organization.	Transparency in reporting		
G4-21	Material aspect boundary outside the organization.	Transparency in reporting		
G4-22	Restatements of information provided In previous reports.	Transparency in reporting		
G4-23	Significant changes from previous reporting periods in the Scope and Aspect boundaries.	Transparency in reporting		
Stakeholder engagement				
G4-24	Stakeholder groups engaged by the organization.	Transparency in reporting		
G4-25	Basis for identification and selection of stakeholders with whom to engage.	Transparency in reporting		
G4-26	Approach to stakeholder engagement and frequency.	Transparency in reporting		
G4-27	Key topics and concerns that have been raised through stakeholder engagement.	Transparency in reporting		
Report profile				
G4-28	Reporting period.	Transparency in reporting		
G4-29	Date of most recent report.	Transparency in reporting		
G4-30	Reporting cycle.	Transparency in reporting		
G4-31	Contact point for questions regarding the report or its contents.	Transparency in reporting		
G4-32	"In accordance" option the organization has chosen.	Transparency in reporting		
G4-33	Transparency in reporting Policy and current practice with regard to seeking external assurance.	Transparency in reporting		
Governance				
G4-34	Governance structure of the organization.	About Suzano /Corporate governance		

GENERAL STANDARD CONTENTS				
		Chapter/Answer	Global Compact	Sustainable Development Goals
Governance				
G4-56	Organization's values, principles, standards and rules of behavior.	About Suzano /Beliefs/ Values	1 2 3 4 5 6 7 10	9 15 16 17
G4-57	Internal and external mechanisms for seeking advice on ethical and lawful behavior.	About Suzano /Corporate governance	1 2 6 10	
G4-58	Internal and external mechanisms for reporting concerns about unethical or unlawful behavior.	About Suzano /Corporate governance	1 2 6 10	

GENERAL STANDARD CONTENTS				
		Chapter/Answer	Global Compact	Sustainable Development Goals
CATEGORY: ECONOMIC				
Aspect: Economic performance				
G4-DMA	Management.	Financial Capital		
G4-EC1	Direct economic value generated and distributed.	GRI Annex/Finance Capital		1 2 3 4 6 7 8 9 11 13 15 16
G4-EC2	Financial implications of climate change.	Part of the risks and opportunities are Financial implications of climate change raised during the strategic assessment process and later incorporated into our strategic planning.	7 8	13
G4-EC3	Coverage of obligations established in pension plan.	GRI Annex/Human Capital		8

GENERAL STANDARD CONTENTS

		Chapter/Answer	Global Compact	Sustainable Development Goals
--	--	----------------	----------------	-------------------------------

CATEGORY: ECONOMIC

G4-EC4	Financial assistance received from the government.	We do not have a history of receiving financial assistance from the government during the period covered by this report.		
Aspect: Market presence				
G4-DMA	Management.	Financial Capital		
G4-EC5	Variations of ratios of standard entry level wage by gender compared to local minimum wage.	The variation between our lowest wages paid and the national minimum wage was 11.53% during the period.		8
G4-EC6	Senior management hired from the local community	GRI Annex/Corporate governance		
G4-EC7	Development and impact of investments in infrastructure and services offered.	GRI Annex/Financial Capital		1 2 3 4 7 9 11 13
G4-EC8	Significant indirect economic impacts, including the reach of the impacts.	Human Capital/Suppliers		1 2 3 4 7 9 11 13
G4-EC9	Proportion of spending directed at local suppliers in major operational units.	GRI Annex/Human Capital		10 11 12

CATEGORY: ENVIRONMENTAL

Aspect: Energy				
G4-DMA	Management.	Natural Capital		
G4-EN3	Energy consumption within the organization.	GRI Annex/Natural Capital		7 8 12 13
G4-EN4	Energy consumption outside the organization.	GRI Annex/Natural Capital		7 8 12 13
G4-EN5	Energy intensity.	GRI Annex/Natural Capital		7 8 12 13
G4-EN6	Reduction in energy consumption.	GRI Annex/Natural Capital		7 8 12 13

GENERAL STANDARD CONTENTS

		Chapter/Answer	Global Compact	Sustainable Development Goals
--	--	----------------	----------------	-------------------------------

CATEGORY: ENVIRONMENTAL

Aspect: Water

G4-DMA	Management.	Natural Capital		
G4-EN8	Total water withdrawal by source.	GRI Annex/Natural Capital		13 14 15
G4-EN9	Water sources significantly affected by withdrawal of water.	GRI Annex/Natural Capital		13 14 15
G4-EN10	Percentage and total volume of water recycled and reused.	GRI Annex/Natural Capital	7 8 9	13 14 15

Aspect: Biodiversity

G4-DMA	Management.	Natural Capital		
G4-EN11	Natural Capital Operational sites owned, leased, managed in, or adjacent to, protected areas and areas of high biodiversity value outside protected areas.	GRI Annex/Natural Capital		13 15
G4-EN12	ISignificant impacts from activities, products, and services on biodiversity in areas that are protected and of high value to biodiversity, outside protected areas.	GRI Annex/Natural Capital	7 8 9	13 15
G4-EN13	Habitats protected or restored.	GRI Annex/Natural Capital		
G4-EN14	Species on conservation lists.	GRI Annex/Natural Capital		

Aspect: Emissions

G4-DMA	Management.	Natural Capital		
G4-EN15	Direct greenhouse gas emissions (Scope 1).	GRI Annex/Natural Capital	7 8 9	7 13 15
G4-EN16	Indirect Greenhouse gas emissions from purchased energy (Scope 2).	GRI Annex/Natural Capital	7 8 9	7 13 15

GENERAL STANDARD CONTENTS				
		Chapter/Answer	Global Compact	Sustainable Development Goals
CATEGORY: ENVIRONMENTAL				
G4-EN17	Other indirect greenhouse gas emissions (Scope 3).	GRI Annex/Natural Capital	7 8 9	7 13 15
G4-EN18	Greenhouse gas emissions intensity.	GRI Annex/Natural Capital	7 8 9	7 13 15
G4-EN19	Reduction of greenhouse gas emissions.	Natural Capital	7 8 9	7 13 15
G4-EN20	Emissions of ozone-depleting substances.	GRI Annex/Natural Capital	7 8 9	7 13 15
G4-EN21	NOx, SOx, and other significant air emissions.	GRI Annex/Natural Capital	7 8 9	7 13 15
Aspect: Effluents and waste				
G4-DMA	Management.	Natural Capital		
G4-EN22	Water discharge by quality and destination.	GRI Annex/Natural Capital	7 8 9	6 13 14 15
G4-EN23	Weight of waste by type and disposal method.	GRI Annex/Natural Capital	7 8 9	13 14 15
G4-EN24	Total number and volume of significant spills.	No significant spills were registered this year.		13 14 15
G4-EN25	Weight of waste deemed	GRI Annex/Natural Capital		
G4-EN26	Identity, size, protected status and biodiversity value of water bodies and related habitats significantly affected by the organization's discharges of water and runoff.	GRI Annex/Natural Capital	7 8 9	6 13 14 15
Aspect: Compliance				
G4-DMA	Management.	Natural Capital		
G4-EN29	Monetary value of significant fines and number of non-monetary penalties resulting from non-compliance with environmental laws and regulations.	We received five environmental fines in 2016, none incurring significant values. We were not subjected to non-monetary sanctions (seizure, suspension, embargo on project or activity, or restriction of rights) as a result of non-compliance with environmental laws and regulations.		

GENERAL STANDARD CONTENTS

		Chapter/Answer	Global Compact	Sustainable Development Goals
--	--	----------------	----------------	-------------------------------

CATEGORY: ENVIRONMENTAL

Aspect: Transport

G4-DMA	Management.	Natural Capital		
G4-EN30	Significant environmental impacts of transporting products and other goods and materials for the organization's operations, and transporting members of the workforce.	GRI Annex/Natural Capital	7 8 9	11 13

Aspect: Overall

G4-DMA	Management.	Natural Capital		
G4-EN31	Environmental protection investments and expenditures.	GRI Annex/Natural Capital	7 8 9	11 13

Aspect: Environmental assessment of suppliers

G4-DMA	Management.	Human Capital/Suppliers		
G4-EN32	Percentage of new suppliers selected based on environmental criteria.	In addition to competitive sales conditions and quality of the products and services contracted, we require our suppliers to have engagement policies regarding health and operational safety, labor regulations, socio-environmental practices, and human rights. These policies are part of the legal contracts signed between the parties and are accompanied by internal and external audits and monitoring processes for managing supervised workers and risks.	7 8 9	7 11 13 14 15
G4-EN33	Negative environmental impacts in the supply chain.	Our suppliers are periodically evaluated by the supply area with regard to their environmental performance.	7 8 9	12

GENERAL STANDARD CONTENTS

		Chapter/Answer	Global Compact	Sustainable Development Goals
--	--	----------------	----------------	-------------------------------

CATEGORY: ENVIRONMENTAL

G4-EN34	Number of grievances about environmental impacts.	Through Suzano Answers, during the year at the São Paulo Unit we received 41 complaints: four related to odors at the mill, and the rest to report fires. At the MA UNF there were 151 grievances: one reporting a traffic accident involving wildlife, 22 reporting theft of native wood, 1 product spill, 11 reports of erosion, 62 reports of fire, 52 reports of livestock in LR and APP areas, and 2 reports of predatory hunting/fishing. At the BA UNF there were 63 grievances: 40 reporting traffic accidents involving wildlife, 12 related to erosion, 4 reporting predatory hunting/fishing, and 6 reports of livestock in LR and APP areas.	1 2 7 8 10	12
---------	---	--	-----------------------	----

CATEGORY: SOCIAL/ LABOR PRACTICES AND DECENT WORK

Aspect: Employment

G4-DMA	Management.	Human Capital/Employees		
G4-LA1	Total number and rates of new employee hires and employee turnover by age group, gender and region.	GRI Annex/Human Capital	6	5 8 10
G4-LA2	Benefits provided to employees.	GRI Annex/Human Capital	3	3 5 8 10
G4-LA3	Return to work after maternity/ paternity leave.	GRI Annex/Human Capital		
G4-LA4	Notice periods regarding operational changes.	There is no deadline for the communication of important operational changes. However, notice to the internal audience is prioritized.		

GENERAL STANDARD CONTENTS

		Chapter/Answer	Global Compact	Sustainable Development Goals
CATEGORY: SOCIAL/ LABOR PRACTICES AND DECENT WORK				
Aspect: Occupational health and safety				
G4-DMA	Management.	Human Capital/Employees		
G4-LA5	Percentage of the workforce represented in formal health and safety committees.	100%		3 8
G4-LA6	Types and rates of injuries, Work-related illnesses, lost days, absenteeism, and number of deaths by region and gender.	GRI Annex/Human Capital		3 8
G4-LA7	Employees with high incidence or high risk of work-related illness.	Our activities are not related to a high incidence of specific diseases. However, any work-related risk is attenuated by engineering and administrative provisions, use of personal protective equipment (PPE), and workplace gymnastics activities and ergonomics programs.		3 8
G4-LA8	Topics related to health and safety covered by formal agreements with trade unions.	Human Capital/Employees		3 8
Aspect: Training and education				
G4-DMA	Management.	Human Capital/Employees		
G4-LA9	Employees Average Number of training per year per employee, by gender and functional category.	GRI Annex/Human Capital		12
G4-LA10	Programs for skills management skills and continuous learning that contribute to continuing employability during preparation for retirement.	We do not have programs with this focus.		8 12

GENERAL STANDARD CONTENTS				
		Chapter/Answer	Global Compact	Sustainable Development Goals
CATEGORY: SOCIAL/ LABOR PRACTICES AND DECENT WORK				
G4-LA11	Percentage of employees who receive regular performance reviews and career development, by gender and functional category.	100%		8 12
Aspect: Diversity and equal opportunities				
G4-DMA	Management.	Human Capital/Employees		
G4-LA13	Ratio between men's and women's salary	The ratio between the average salary of men and women was 0.1% in 2016.		
Aspect: Evaluation of suppliers' labor practices				
G4-DMA	Management.	Human Capital/Employees		
G4-LA14	Percentage of new suppliers selected according to environmental criteria.	100% of new suppliers in 2016 were selected according to labor practice criteria.	4 5 6	8 12
G4-LA15	Significant impacts for the labor practices in the supply chain.	In 2016, 272 suppliers were evaluated on their labor practices, and in one case potential negative impacts were identified, such as: compromised employee performance and quality of deliverables and results, high turnover, loss of intellectual capital and operational knowledge, negative exposure, and costs related to labor lawsuits. Improvements were agreed to in order to minimize these impacts, and the contract with that trading partner was consequently maintained.		8 12
Aspect: Mechanisms for grievances and complaints related to labor practices				
G4-DMA	Management.	Human Capital/Employees		
G4-LA16	Number of grievances and complaints related to labor practices filed, addressed, and settled through formal grievance mechanisms.	In 2016 34 labor-related grievances were reported through formal mechanisms.		8 12

GENERAL STANDARD CONTENTS

		Chapter/Answer	Global Compact	Sustainable Development Goals
--	--	----------------	----------------	-------------------------------

CATEGORY: HUMAN RIGHTS

Aspect: Indigenous Rights

G4-DMA	Management.	Social Capital		
G4-HR8	Total number of cases in which the rights of indigenous and traditional peoples were violated, and measures taken in this regard.	No cases of this type were registered in 2016.		1 2 3 4 10 11 15 16

CATEGORY: SOCIETY

Aspect: Local communities

G4-DMA	Management.	Social Capital		
G4-SO1	Percentage of operations with local community engagement programs.	100% of operations are accompanied by community engagement programs.		1 2 3 4 10 11 15 16
G4-SO2	Operations with significant real and potential negative impacts on local communities.	Anexo GRI/Capital Social		1 2 3 4 10 11 15 16

Aspect: Unfair competition

G4-DMA	Management.	Social Capital		
G4-SO7	Number of lawsuits related to unfair competition, anti-trust, and monopoly.	No lawsuits motivated by Unfair competition, antitrust, or monopoly were registered.		9
G4-DMA	Management.	Social Capital		
G4-SO11	Number of grievances related to impacts in society filed, addressed, and resolved through formal grievance mechanisms.	We received 11,800 calls related to 74 impacts, 63 of which were resolved this year and 11 are still under analysis. Another seven impacts remaining from 2015 were resolved.		12



Team

COORDINATION & WORKING GROUP

Alexandre Di Ciero, Marcela Porto, Talita Sato, Estevão Braga, Maria Augusta Bottino G. Santos, André Magnabosco, Valéria Parisotto and Layane Serrano

COPY & EDITING

KMZ Conteúdo

MATERIALITY MATRIX

Avesso Sustentabilidade

GRAPHIC DESIGN

Manolo Pacheco and Sergio Honorio

ILLUSTRATION

Kiwi Edições e Artes Ltda

PHOTOGRAPHY

Suzano Pulp and Paper Image Bank

ACKNOWLEDGEMENTS

We thank all the employees and partners who contributed to the development of this report.